

# SOUTHLAKE TARGET INDUSTRY MEDICAL & HEALTHCARE

**277**

MEDICAL & HEALTHCARE  
BUSINESSES IN SOUTHLAKE

**841,077**

TOTAL SQ FT  
MEDICAL USE

**81%**

OCCUPANCY  
RATE

**2,721**

MEDICAL & HEALTHCARE  
JOBS IN SOUTHLAKE

**\$227,633**

SOUTHLAKE AVERAGE  
HOUSEHOLD INCOME

**\$14,385**

AVERAGE ANNUAL  
MEDICAL EXPENDITURES  
PER HOUSEHOLD

**\$140,086,866**

TOTAL ANNUAL  
MEDICAL EXPENDITURES  
BY SOUTHLAKE RESIDENTS

Sophisticated and neighborly, Southlake, Texas, provides the perfect oasis from the frenzy of Dallas-Fort Worth. Its central location, premier planning, and attention to the smallest detail make Southlake the perfect place for business.

## Perfectly Planned.

Southlake has become a premier community in the Dallas-Fort Worth metropolitan area. The City's dedication to quality development, sound fiscal policies, and effective strategic management has made it an exemplary community. With a vibrant economy, a successful downtown, and primarily affluent population, the city is an employment center in a region with strong economic growth.

## Accessible Location.

In the heart of the fastest-growing region in the United States, with easy access to both DFW International Airport and Alliance Airport, Southlake offers an ideal location for businesses and travelers in North Central Texas.

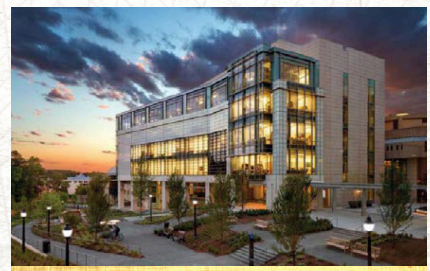
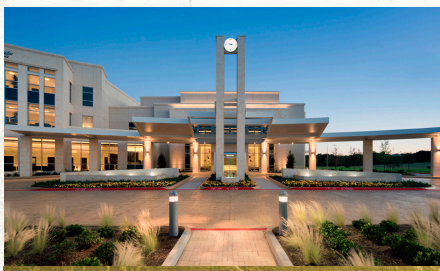
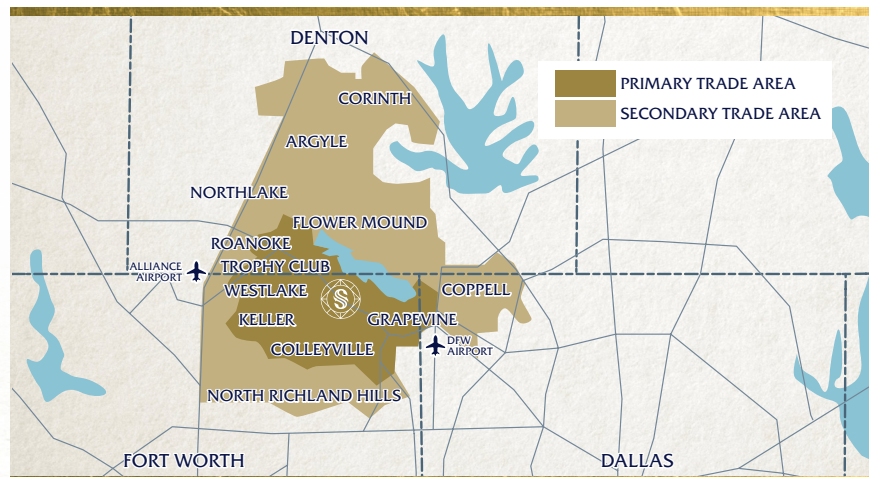
## Growing Population.

Continued growth and development in communities west of Southlake bring opportunities to capture the medical needs of new residents. Southlake is well positioned as a destination for healthcare serving the growing population in Tarrant, Denton, and Dallas counties.

## A Medical Destination.

State Highway 114 runs diagonally through the city, heading east through Las Colinas and into downtown Dallas and west toward the Alliance Airport. The land adjacent to State Highway 114 near the Methodist Southlake Hospital is ideal for a medical district, catering to specialty medical fields, pediatrics, geriatrics, plastic surgery, pharmacy, cardiology, neurosciences, and research facilities.

HEALTH & WELLNESS  
MEDICAL SPECIALTIES  
COSMETIC PROCEDURES  
PEDIATRIC SERVICES  
SENIOR CLINICS  
OUTPATIENT THERAPY  
SURGICAL FACILITIES  
MEDICAL RESEARCH &  
DEVELOPMENT



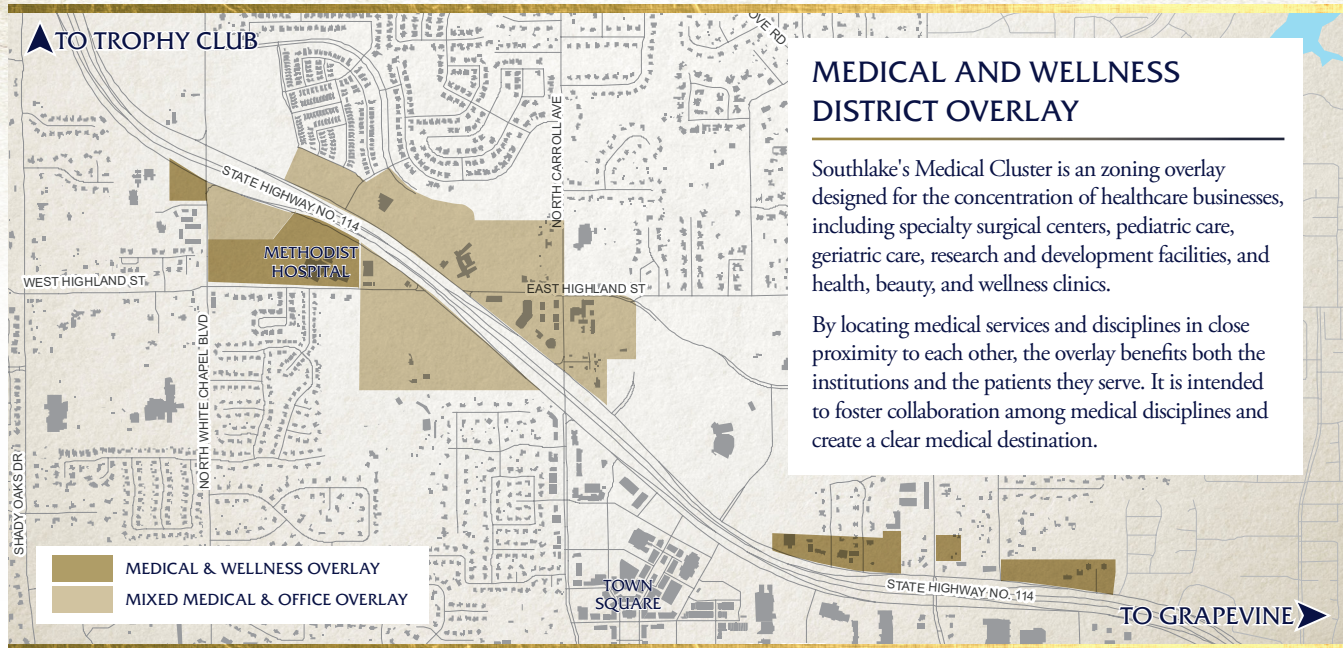
The perfect place for business.



SELECT  
SOUTHLAKE



# SOUTHLAKE TARGET INDUSTRY MEDICAL & HEALTHCARE



## SOUTHLAKE HOUSEHOLD SPENDING POTENTIAL INDEX

NATIONAL AVERAGE  
100

## AVERAGE AMOUNT SPENT PER HOUSEHOLD

## SOUTHLAKE MARKET TOTAL ANNUAL MEDICAL EXPENDITURES

PHYSICIAN SERVICES	278	\$669.66	\$6,381,155
DENTAL SERVICES	280	\$1,041.36	\$9,923,089
EYECARE SERVICES	261	\$158.31	\$1,508,492
LAB TESTS, X-RAYS	265	\$162.39	\$1,547,444
HOSPITAL SERVICES	244	\$424.92	\$4,049,055
NURSING HOME CARE	188	\$63.04	\$600,738
OTHER MEDICAL SERVICES	267	\$288.57	\$2,749,746
NONPRESCRIPTION DRUGS	251	\$319.74	\$3,046,840
PRESCRIPTION DRUGS	244	\$947.91	\$9,032,654
NONPRESCRIPTION VITAMINS	257	\$187.48	\$1,786,475
MEDICARE PRESCRIPTION DRUG PREMIUMS	197	\$223.32	\$2,127,990
EYEGLASSES AND CONTACT LENSES	270	\$255.07	\$2,430,538
HEARING AIDS	234	\$65.18	\$621,081
MEDICAL EQUIPMENT FOR GENERAL USE	242	\$13.65	\$130,073
OTHER MEDICAL SUPPLIES	266	\$158.83	\$1,513,445

\* THE SPENDING POTENTIAL INDEX (SPI) IS HOUSEHOLD-BASED AND REPRESENTS THE AMOUNT SPENT FOR A PRODUCT OR SERVICE RELATIVE TO A NATIONAL AVERAGE OF 100. DATA SOURCED FROM ESRI, 2018.